

# AMPS Atlanta T-55 Club Project

## References:

*Inside the Great Tanks*, Hans Halberstadt, The Crowood Press, 1997

*T-54 and T-55 Main Battle Tanks 1944 – 2004*, Steve Zaloga and Hugh Johnson, Osprey New Vanguard, 2004

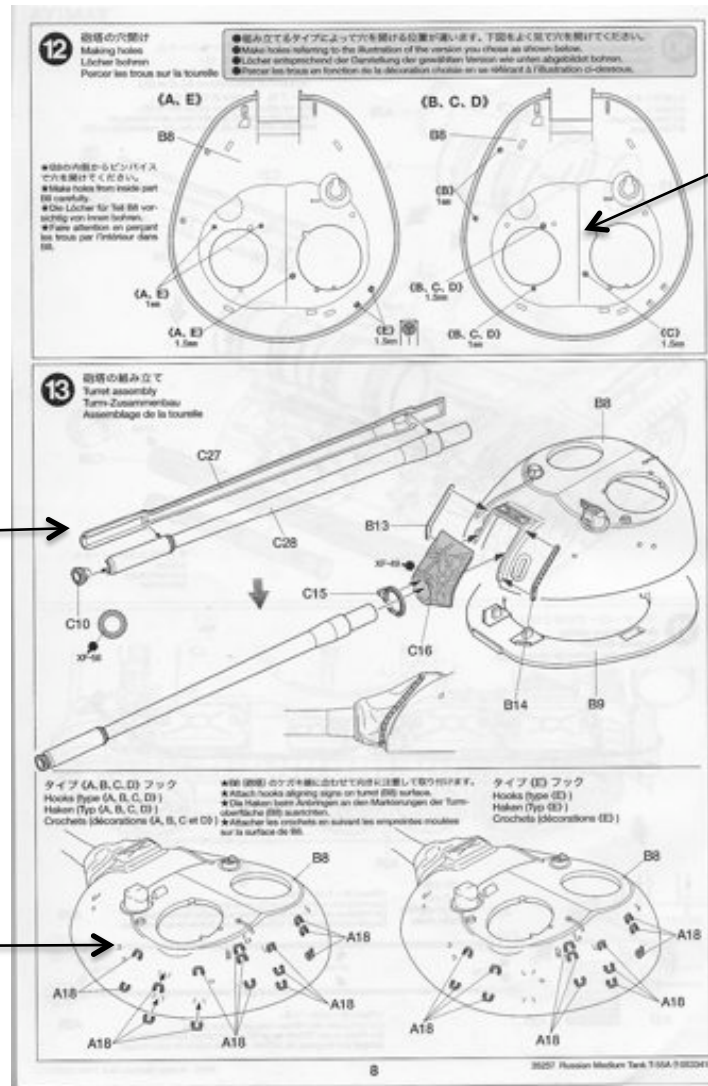
*Modelling the T-55 Main Battle Tank*, Nicola Cortese, et. al., Osprey Publishing, 2005

*Centurion vs. T-55 - Yom Kippur War 1973*, Simon Dunstan, Osprey Publishing, 2009

*Toadman's Tank Pictures T-55A CD*, by Chris "Toadman" Hughes

**Magazines:** Military Miniatures in Review Nos. 32, 34; AFV Modeler Nos. 20, 26, 37;  
Military Modelcraft International Oct. 2009, April 2010; Military Modelling Feb./Mar. 2003;  
Model Military International Mar. 2007

# Turret

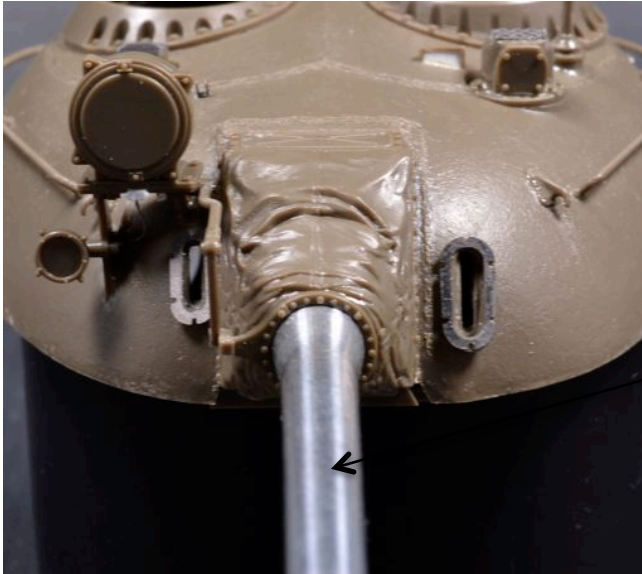


I followed the drill instructions for version B.

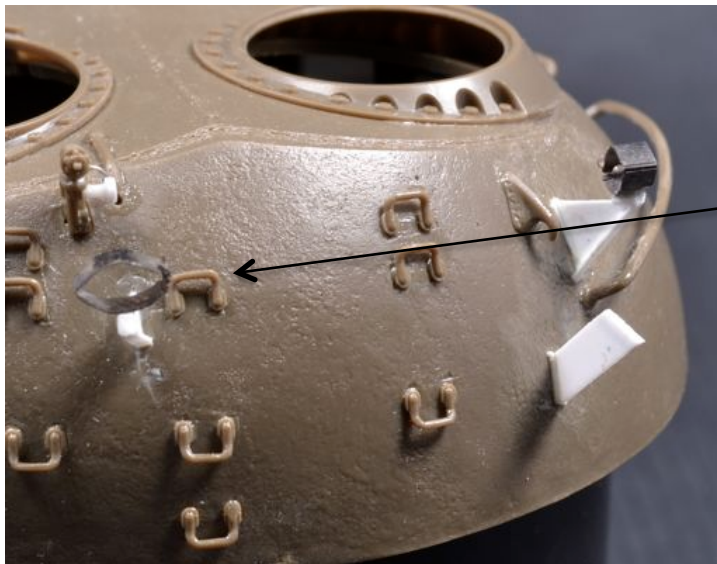
I replaced the kit barrel with a turned metal barrel from Jordi Rubio.

I applied the tie down hooks as diagrammed for version B.

## Turret



Note metal barrel.



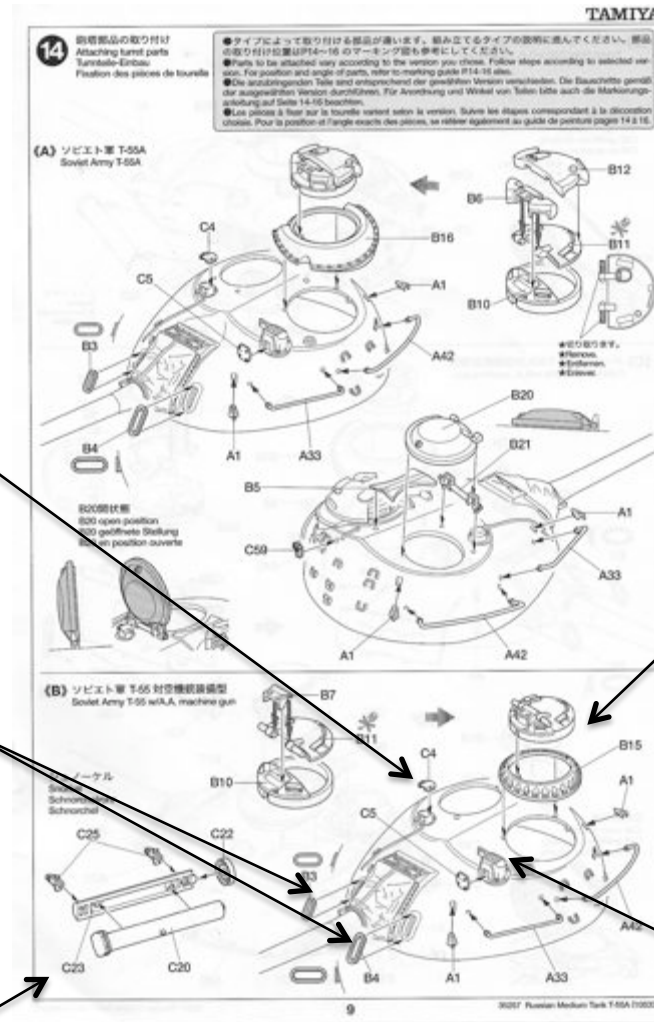
I attached the kit provided tie down loops as I felt they were close enough to scale and would speed up the process as opposed to using bent wire.

# Turret



Note the weld beads on the tie down loops.  
This feature is molded on the kit supplied  
parts.

# Turret



Part C4 was replaced with its P/E substitute.

On parts B3 and B4 the P/E facing was added for more detail.

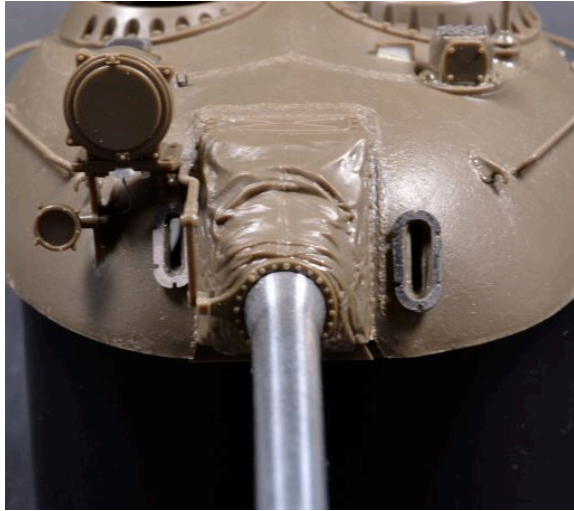
I did not include the turret mounted snorkle.

Extensive detailing was added to the Cdr's cupola including blanking all of the periscopes and adding scratchbuilt and P/E interior details

The molded tread plate pattern on the gunner's sight was sanded smooth and replaced with a P/E plate.

# Turret

Note facings on MG and telescope port.



Replaced tread plate on gunner's sight.



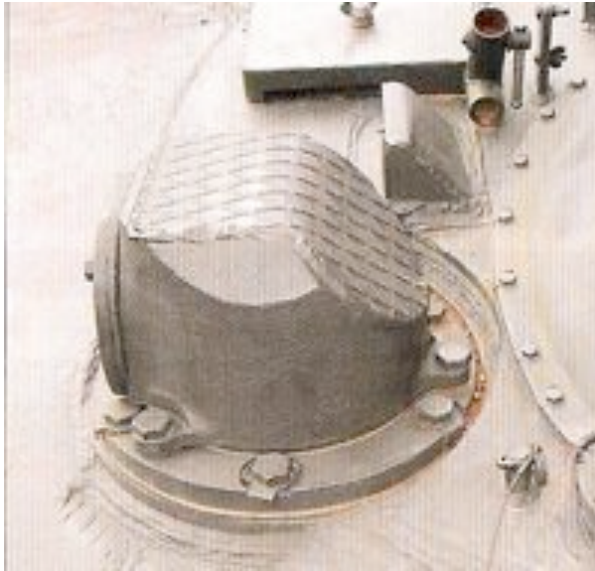
Replaced loader's periscope cover.



Detailed Cdr's hatch and cupola interior.



## Turret



Note the tread plate welded on top of the gunner's sight.



There is lots of detail inside the Cdr's cupola. Since my model was going to be open hatch, I had to scratch build some of the basic items such as the periscope blocks, sighting eyepiece and rotation handles.

# The Commander's Cupola



Various sizes of styrene strip and rod are used to fabricate the interior of the cupola vision blocks and sight.

Plastic rod is used to make the head cushion, eyepieces, and traversing handles.



The hatch handle is from the spares box.

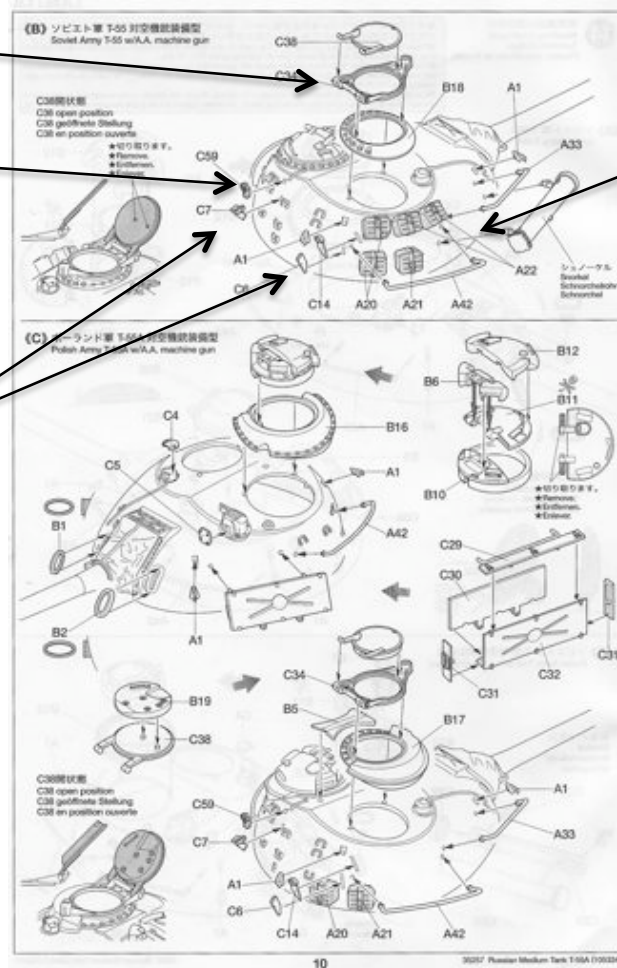
The closures and locks are P/E as are the brackets holding the periscopes

# Turret

Scratched details were added to the loader's MG mount.

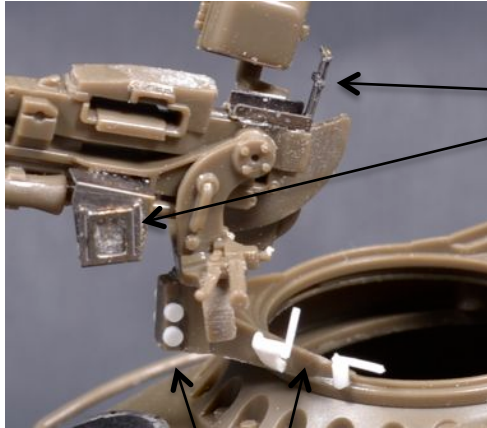
I added the external intercom mount and wiring to the rear light fixture.

For parts C6, C7, and C14 I replaced their bases with styrene strip and used the P/E brackets at top.



I did not apply the turret mounted snorkle and ammo cans.

# Turret



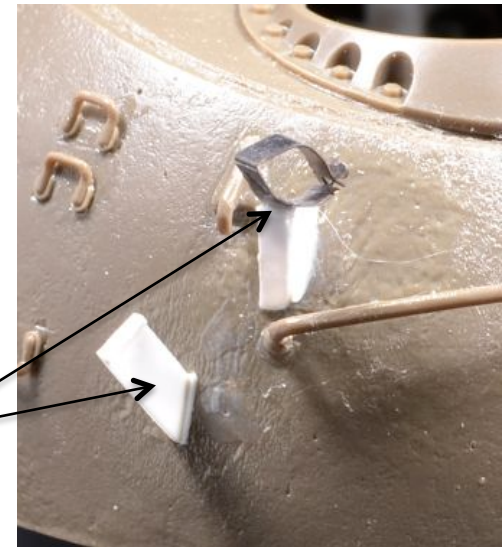
P/E rear gun sight and ammo mounting bracket.

Gun ring locking handles and pintle detail added with styrene stock.



Replacement of parts C6, C7, and C14 with styrene strip and P/E.

Note wiring for directional light and addition of the external intercom connection.



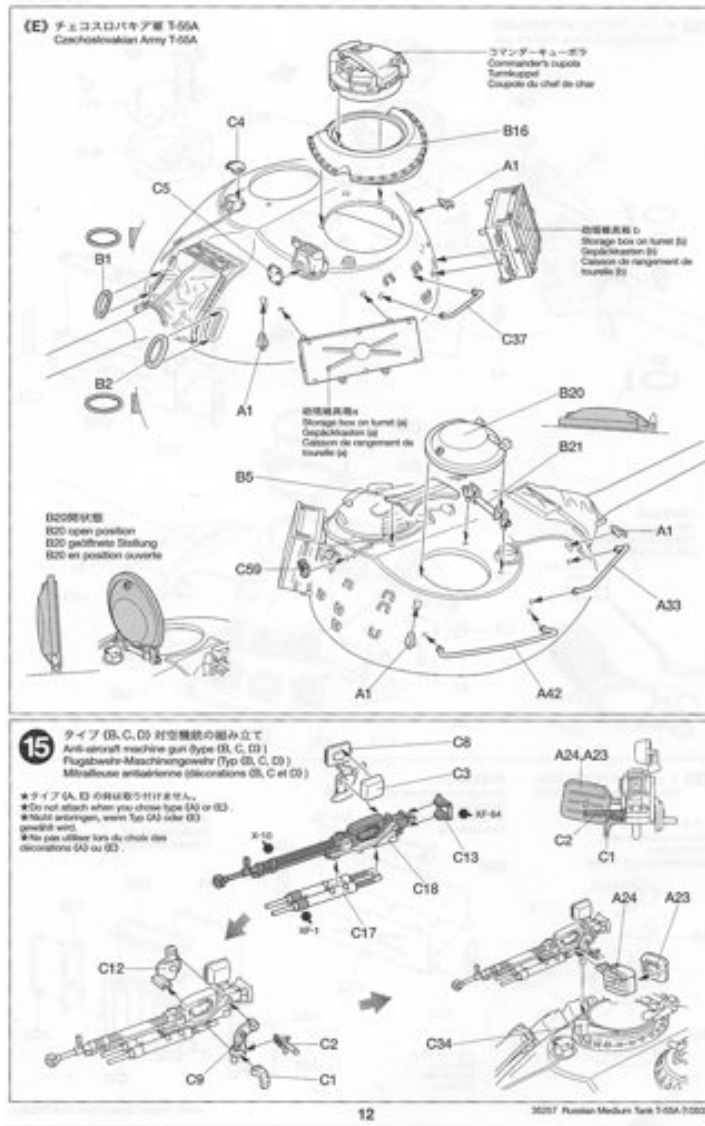
# Turret

Note wiring for directional light and external intercom connection.



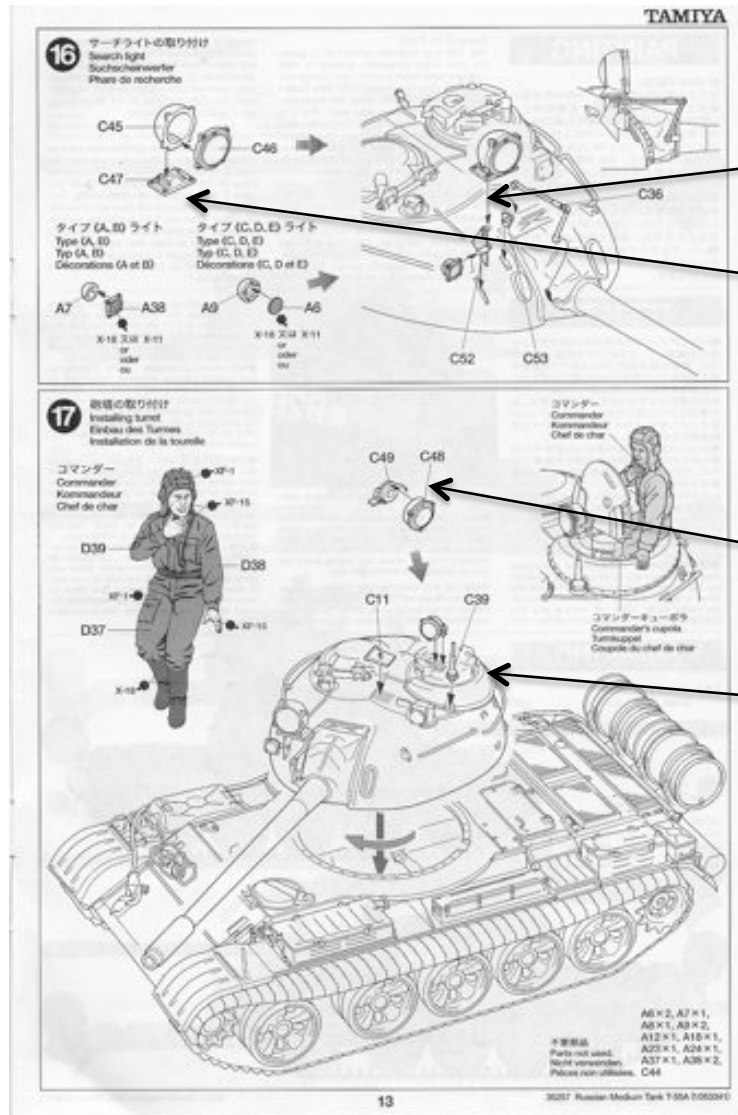
Note locking handles and pins on MG pintle.

# Turret



The 12.7mm MG was built per the instructions with the addition of the P/E as noted previously.

# Turret



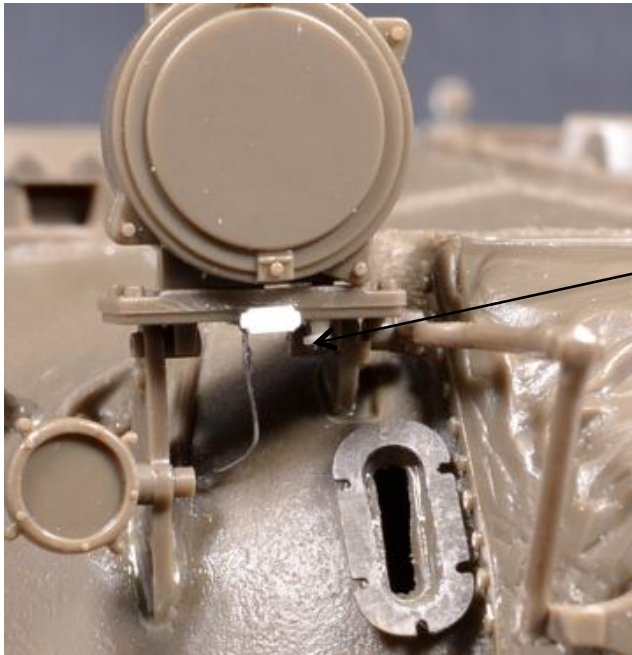
Wiring was added to the IR light assembly for both lights.

Small details were added to the IR light mounting plate.

I replaced part C49 with the P/E alternative.

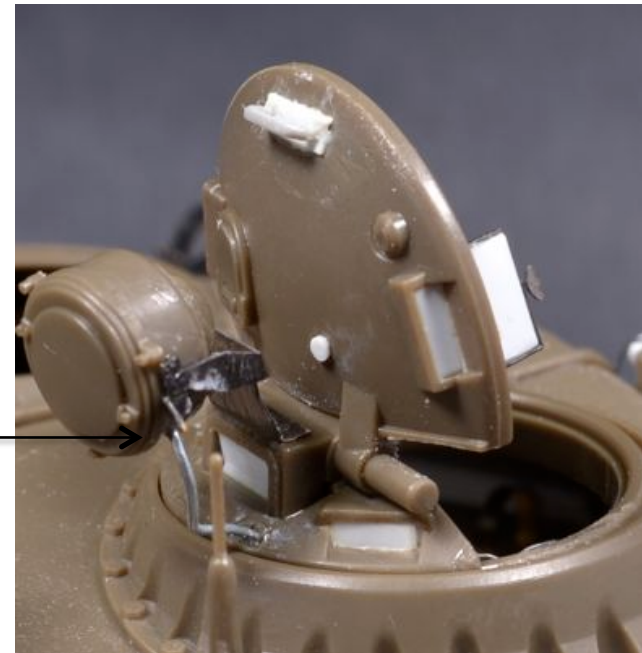
Wiring was added for the Cdr's searchlight.

# Turret



Added details and wiring for the searchlight mounting plate.

Added P/E bracket and wiring for Cdr's searchlight.



# Interior

I plan on displaying this model as an abandoned Syrian T-55 on the Golan Heights in 1973. As such the hatches would be open and the interior visible. AMPS contest rules require that any vehicle with open hatches must show an interior or have a figure in the hatch. Therefore I had to install an interior.

I used several references, including the Kagero Top Shots #33 and the WWP T-54/55 books for their interior views. Thanks to Chris Ballance for these additional resources.

My goal was not to replicate the interior to 100% accuracy, rather to model the major components that would be readily visible through the hatches.

I did use a few parts from the spares box, but the majority of construction was done with styrene sheet, rod, and strip and the use of my handy punch and die set.

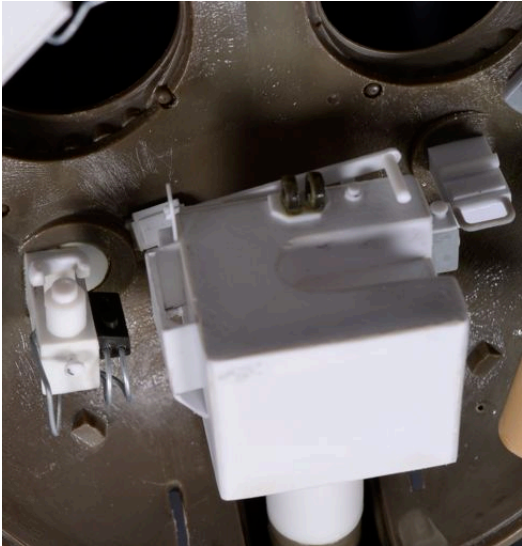
Here's what I was able to accomplish.

# Turret Interior

Radio set and intercom controls



Gun Breech, gunner's sight, loader's periscope.



Loader's station



Cdr's and Gnr's seats and Gnr's controls.

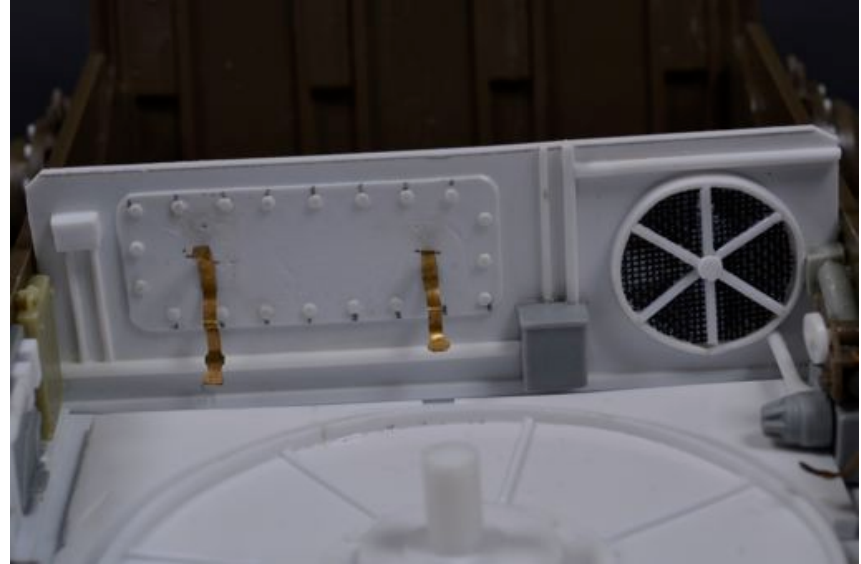


# Turret and Hull Interior

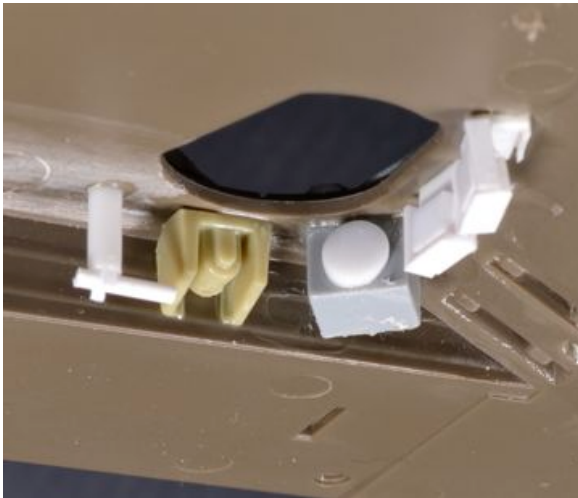
Loader's seat



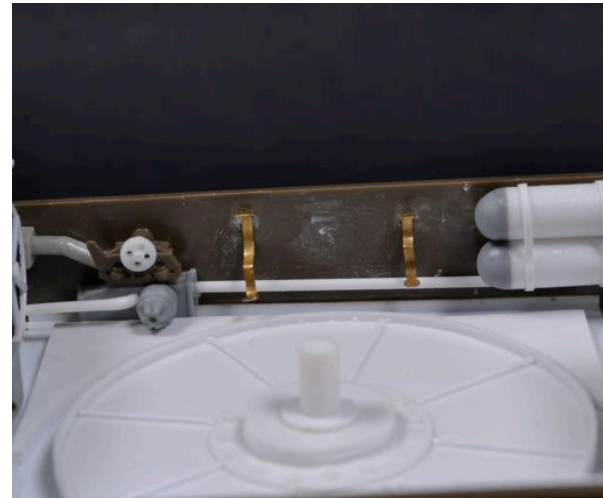
Fighting compartment rear wall



Inside the driver's hatch

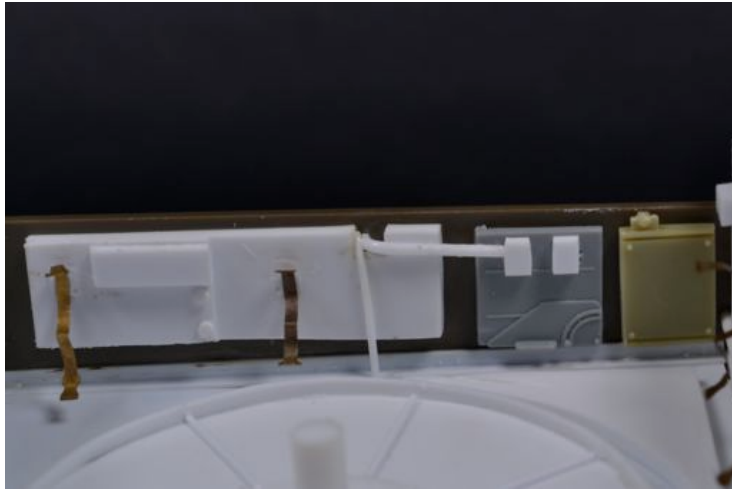


Fighting compartment left wall

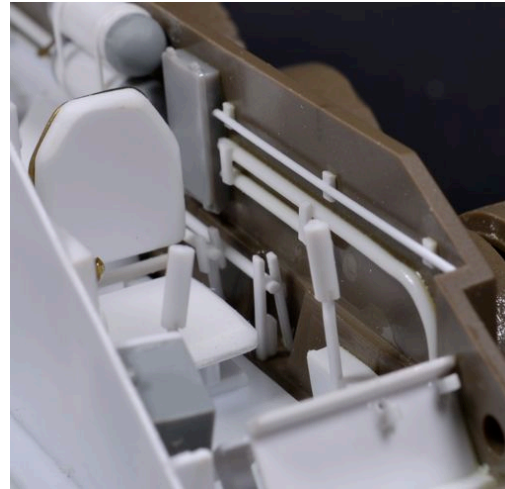


# Interior

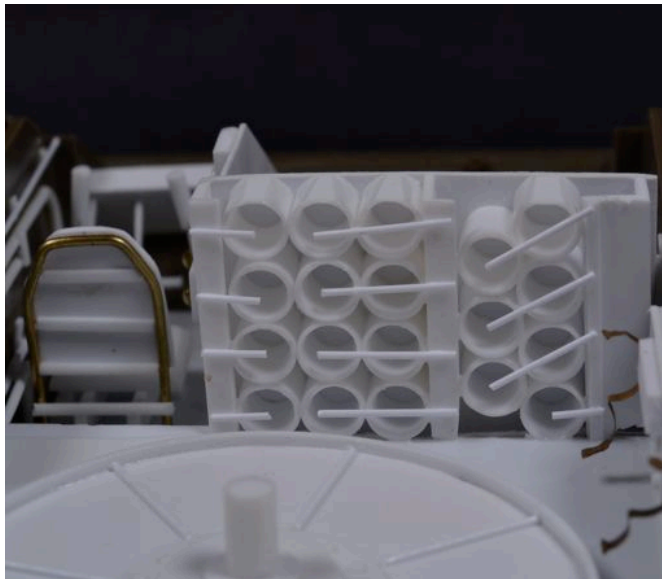
Fighting compartment right wall



Driver's compartment



Fighting compartment front wall



Driver's compartment

